

Installation

- [Installation](#)
- [Setup Wizard](#)

Installation

MSI file

You can run an installer to install Cloud Connector Plus

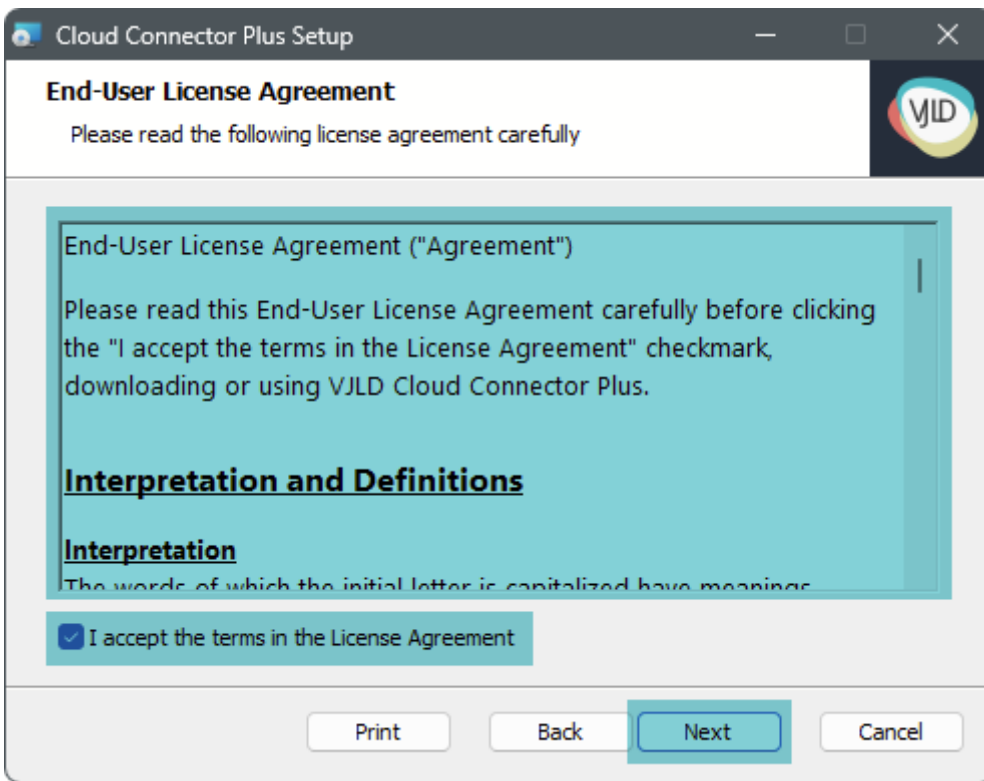


Installation wizard

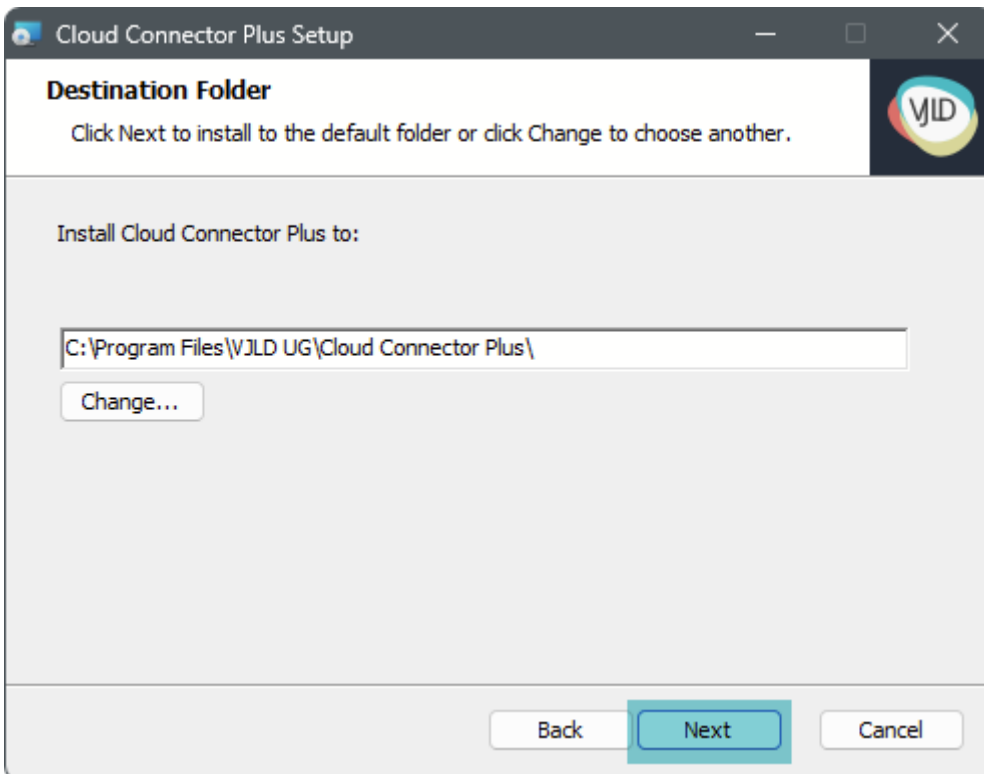
First you will see the wizard welcome window, press "Next" to continue



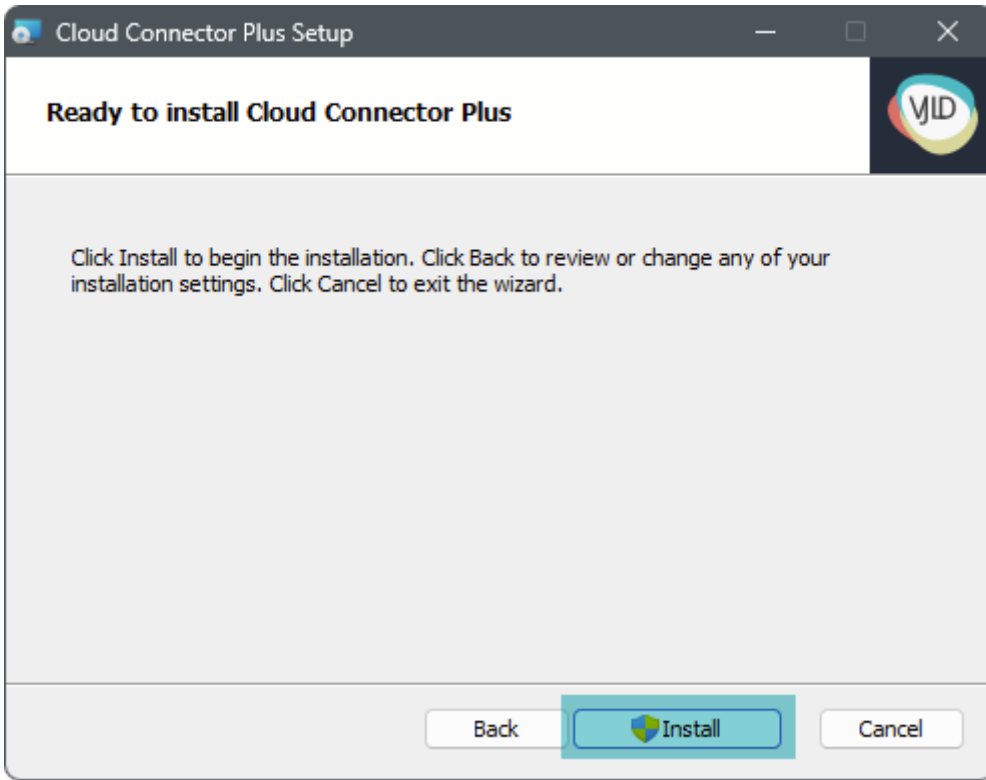
Read carefully the end user agreement and accept it to continue



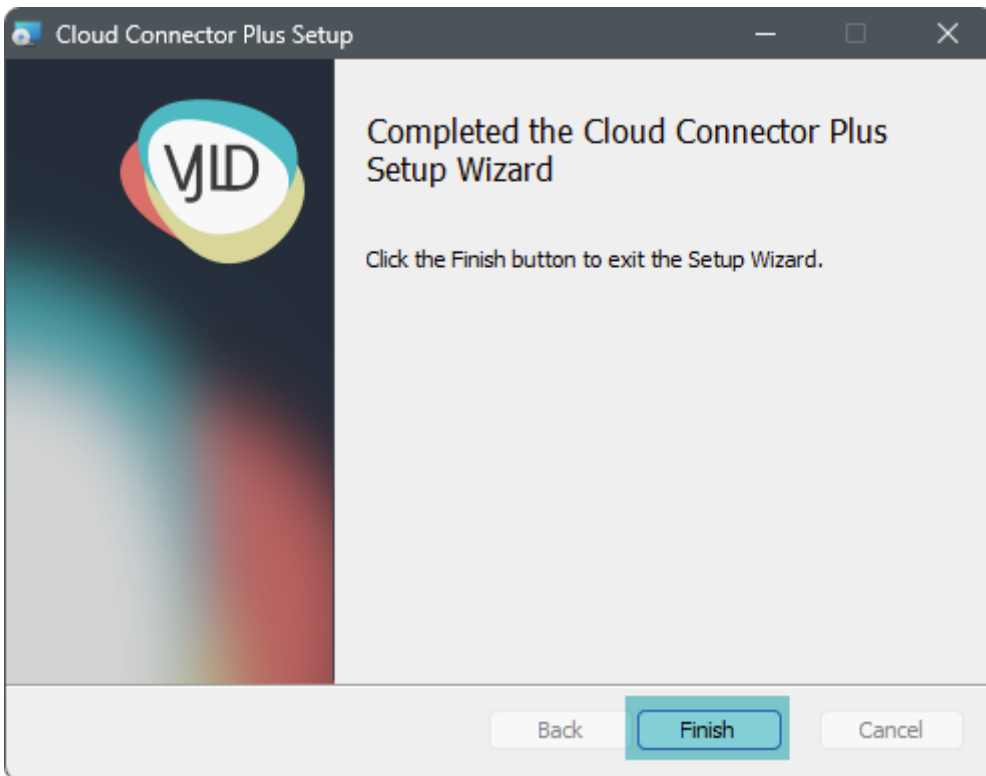
Keep default installation path or customize it



Now you are ready to install Cloud Connector Plus



Installation is complete

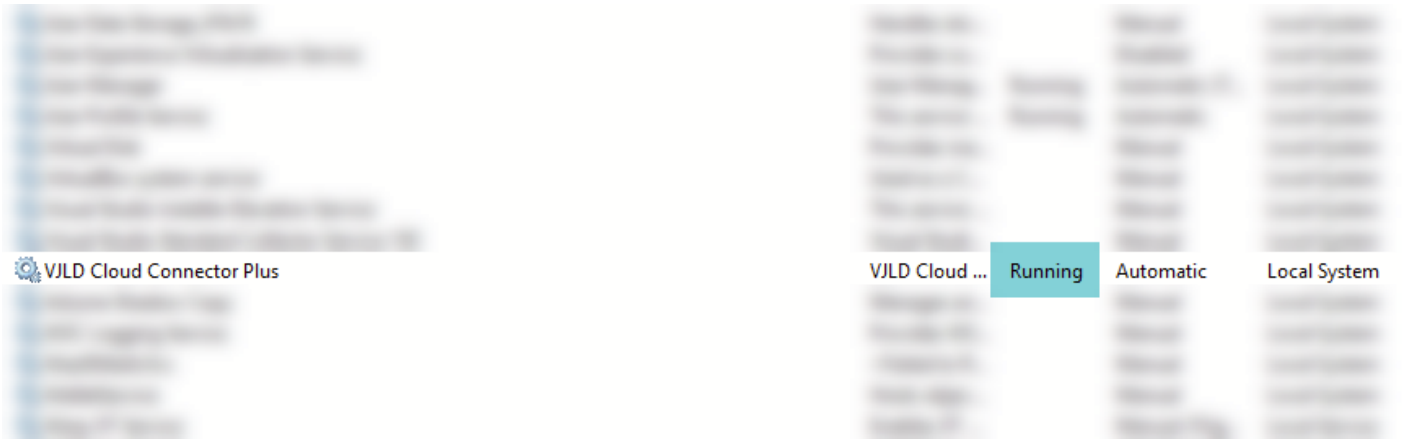


Installer automatically placing a shortcut on desktop to the backend



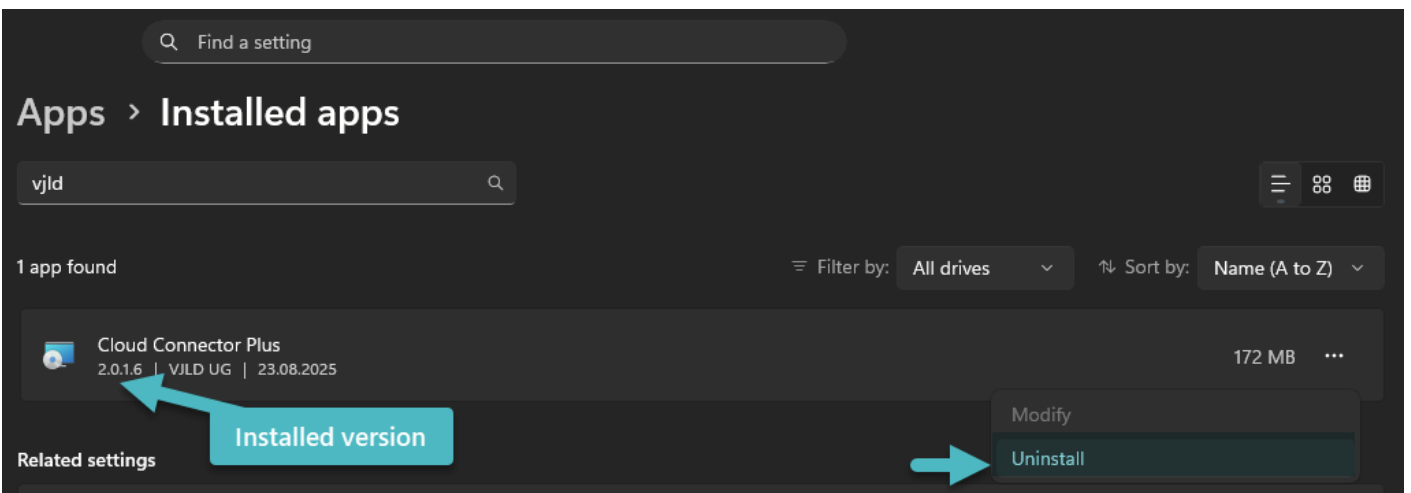
Service

Verify that the service is running



Uninstall

You can uninstall Cloud Connector Plus at any time



Setup Wizard

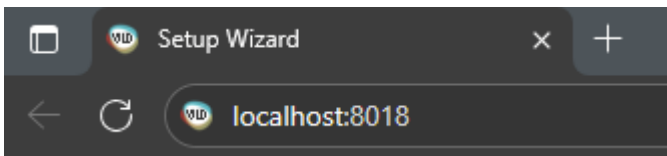
Backend

Service

Please check if Cloud Connector Plus service is running. Maybe you've to assign different user to delegate more privileges.

Access

You can access backend by using your preferred browser navigation to localhost and default port 8018.



You can access the backend by running shortcut on your desktop



Wizard

Welcome

First page should show you a welcome message

Setup Wizard

Let's get started

Thank you for choosing **Cloud Connector Plus**. We're excited to guide you through a smooth and seamless setup process.

Whether you're new to **Cloud Connector Plus**, this wizard will help you get up and running in no time. Follow the step-by-step instructions, and you'll be ready to enjoy all the powerful features and benefits in just a few minutes.

If you need assistance at any point, our support team is here to help. Let's get started!

Next ▶

Administrator Account

Next page will guide you to create an administrator account. Please enter account name and password

Setup Wizard

Setup Administrator Credentials

Welcome to the next step in setting up your **Cloud Connector Plus**. To ensure the security and functionality of your system, please create your Admin account.

Username will be your primary identifier for administrative access. Choose a name that is unique and easy to remember. To secure your account, please choose a strong password. Ensure it is at least 8 characters long and includes a mix of letters, numbers, and symbols.

Once you've entered your Admin credentials, click "Next" to proceed with the setup.

Note: Keep your admin name and password safe and confidential. You'll need these credentials to access and manage the system.

Username	Admin
Password	
Confirm Password	

◀ Previous

Next ▶

Create first API key

Define your first API key

- Name - Provide unique name
- Description - Your individual description for this API key
- API Key - Will be generated automatically

Setup Wizard

Add first API key

To connect with external services and enable seamless integrations, you'll need to add your first API key.

What's an API key? An API key is a unique identifier that authenticates your application or system when communicating with **Cloud Connector Plus**.

Enter the Name and Description in the fields provided below and generated API key will be assigned to it.

Name	ERP
Description	My API key for ERP access
API Key	nMpGcXcPVpITqawFtvWavSMpT3cicu9h

◀ Previous

Next ▶

Finish

Finalize the setup and keep in mind to activate the product, also when you want to use the trial version

Setup Wizard

Setup Complete!

Congratulations! Setup is successfully done.

Thank you for your patience and for following through with the setup process. You are now ready to explore and enjoy all the features **Cloud Connector Plus** has to offer.

Please keep in mind to activate your product instance.

Please use the administrator credentials you've just created to log in and start managing your system.

◀ Previous

Finish

Login

Enter your administrator account



Cloud Connector Plus

Sign in

v 2.0.1.6